

CTS-Software CID-Pro V5

Operating system has never been so simple and user-friendly!



Computer Integrated Documentation Pro V5

We continuously develop for you and with you. Thanks to your suggestions, the CID-Pro V5 has become even more efficient and user-friendly.

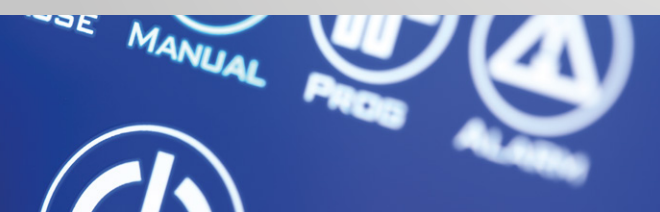
With our current CID-Pro software you can control up to 32 devices, program test cycles and document your data. You have an overview of all important device parameters and can easily program your cycles and evaluate

your measured results. Equally, the CID-Pro software can send event-driven e-mails so that you always know how your device is running. And all this with very easy, self-explanatory operation.

Your advantages:

- ▶ All important device data at a glance
- ▶ Comprehensive range of communication options

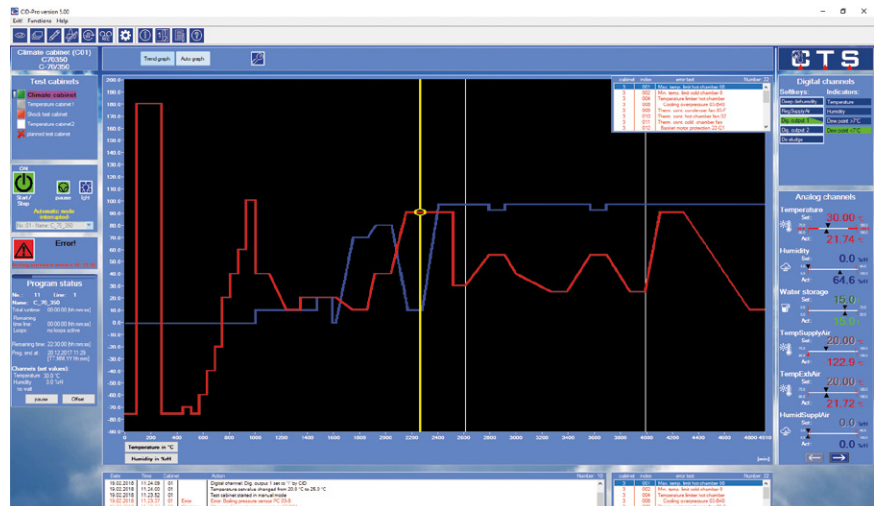
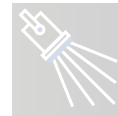
- ▶ Display all tests running in your laboratory for efficient test planning
- ▶ Easily input test cycles
- ▶ Clear evaluation of the measured results
- ▶ Communication with the device configurable via RS 232, RS 485 or a network
- ▶ Online monitoring function for further computers connected to the network



Status overview

The new CID-Pro V5 is impressive for its ease of use and self-explanatory operation.

- ▶ Displays all connected units (Chamber name, commissioning, type and status).
- ▶ Displays all analogue and digital channels for any selected unit.
- ▶ Displays status information for the units: Program or manual operation, error, warning and operation messages.
- ▶ Dynamic contextual screen setup → elimination of unnecessary elements.
- ▶ Displays all functions via symbols and menu bars
- ▶ All symbols also feature a text description of the tool.
- ▶ Short but informative reports listing for all units.
- ▶ Extended configuration: long channel names possible and name extensions for the counts.
- ▶ Values can be input via a new numeric keypad (touch-screen input).
- ▶ New device information menu → all device information in one place.
- ▶ The analogue channels are displayed with the active limits.
- ▶ Language can be changed during running time to German, English or Czech.
- ▶ Help in PDF format.

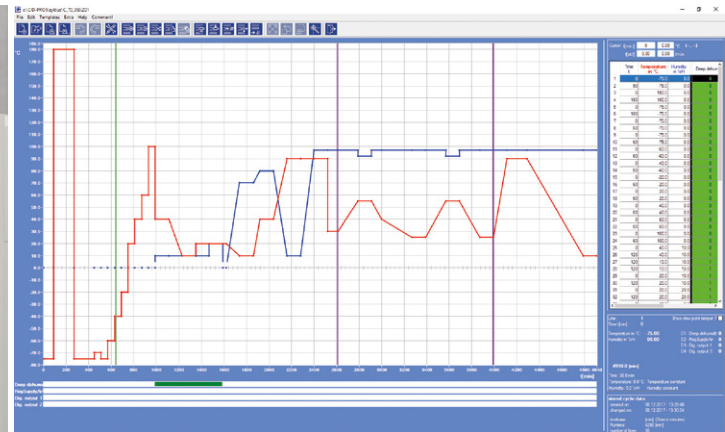


Currently running test program

Program editor (Editor Module)

Create your test cycle programs simply and easily. The new extended CID-Pro V5 Editor has many helpful functions making its use even easier.

- ▶ Create, change or delete the test cycle programs.
- ▶ Define value lines, loops, conditional jumps or subprograms in the test program.
- ▶ External, independent module can be opened multiple times
→ Compare test programs
- ▶ 8 programmable control channels, instead of the previous 4.
- ▶ Double-clicking on a test program file immediately displays it in the editor module (new instance).
- ▶ Set the time basis for a program: Seconds, minutes or hours.
- ▶ Zoom a specific area to set a value more accurately (20 levels).
- ▶ Display all functions via symbols and menu bars. All symbols feature a text description of the tool.
- ▶ Detailed information about all channel values for the selected lines.
- ▶ Internal CID-Pro program format adapted to the control panel.
- ▶ Details about the loaded test program, such as „created on“ or „changed on“.
- ▶ Copy, cut or paste lines or whole blocks.
- ▶ Input wait functions, limit values and tolerance bands.



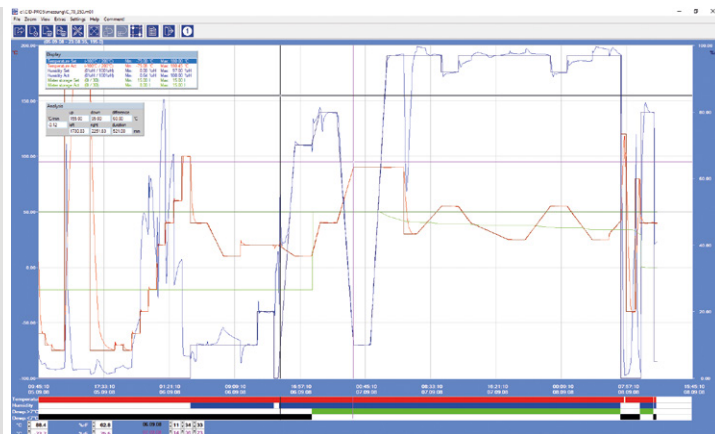
- ▶ Create or shift a point in the graphics by double-clicking on the new point.
- ▶ Load the last test program opened.
- ▶ Width of the graphical and tabular area can be changed
→ Entire table can now be displayed.
- ▶ Input wizard for the gradient calculation.
- ▶ PDF printout.

Graphical measurement data evaluation (Graphic Module)

A record of the test cycle program can be created storing all analogue and digital channels. This data can be evaluated and the results imported into Microsoft® Excel if required.

- ▶ Display all measurement results.
- ▶ Hide channels which are not to be displayed.
- ▶ Design adapts to the current CTS control panel.
- ▶ External, independent module can be opened multiple times
→ Compare measurement results.
- ▶ Double-clicking on a measurement file displays it directly in the graphics module (new instance).
- ▶ Difference and duration can be calculated.
- ▶ Select real-time displays (date and time) or relative information (e.g. minutes).
- ▶ Zoom a selected area to carry out more accurate evaluations (20 levels).
- ▶ Display all functions via symbols and menu bars. All symbols feature a text description of the tool.
- ▶ Standard configuration for displaying analogue and digital channels is selectable: the first 4 analogue and 4 digital channels have standard target and actual colours.
- ▶ Load the last measured results opened.
- ▶ Extended search for measurement files.
- ▶ Measurement files for the same devices can be combined.

Measurement record of a recently completed test program

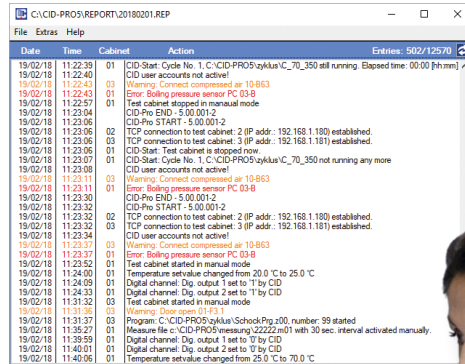


- ▶ Show measurement results in a table (all or within cursor positions).
- ▶ Subareas of measurement results can be chronologically adjusted.
- ▶ Optimized Microsoft® Excel export function with user-changeable options.
- ▶ PDF printout or logging.



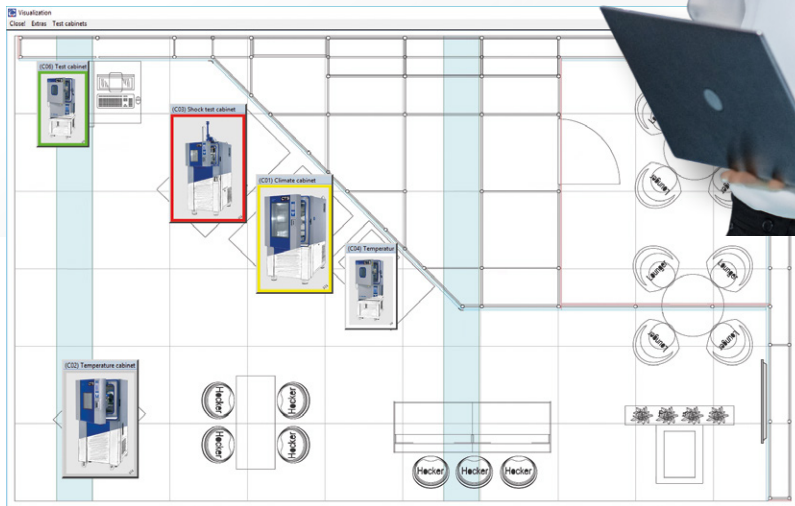
Event logs (Report Module)

Display all actions which are recorded by you and your test control units in the CID-Pro V5 software background.



Date	Time	Cabinet	Action	Entries
19/02/18	11:22:29	01	CID-Start: Cycle No. 1: C:\CID-PRO5\ykkua\C_70_350 still running. Elapsed time: 00:00 [h:mm]	
19/02/18	11:22:40	01	CID user accounts not active!	
19/02/18	11:22:44	03	Warning: Connect compressed air 10:063	
19/02/18	11:22:43	01	Error: Boiling pressure sensor FC 03:8	
19/02/18	11:22:57	01	Test cabinet stopped in manual mode	
19/02/18	11:23:04		CID-Pro END: -5:00:00:1-2	
19/02/18	11:23:06		CID-Pro START: -5:00:00:1-2	
19/02/18	11:23:06	02	TCP connection to test cabinet: 2 (IP addr.: 192.168.1.180) established.	
19/02/18	11:23:06	03	TCP connection to test cabinet: 3 (IP addr.: 192.168.1.181) established.	
19/02/18	11:23:06	01	CID-Start: Test cabinet is stopped now.	
19/02/18	11:23:07	01	CID-Start: Cycle No. 1: C:\CID-PRO5\ykkua\C_70_350 not running any more.	
19/02/18	11:23:08		CID user accounts not active!	
19/02/18	11:23:11	03	Warning: Connect compressed air 10:063	
19/02/18	11:23:11	01	Error: Boiling pressure sensor FC 03:8	
19/02/18	11:23:20		CID-Pro END: -5:00:00:1-2	
19/02/18	11:23:22		CID-Pro START: -5:00:00:1-2	
19/02/18	11:23:32	02	TCP connection to test cabinet: 2 (IP addr.: 192.168.1.180) established.	
19/02/18	11:23:32	03	TCP connection to test cabinet: 3 (IP addr.: 192.168.1.181) established.	
19/02/18	11:23:34		CID user accounts not active!	
19/02/18	11:23:37	01	Warning: Connect compressed air 10:063	
19/02/18	11:23:37	01	Error: Boiling pressure sensor FC 03:8	
19/02/18	11:23:52	01	Test cabinet started in manual mode.	
19/02/18	11:24:00	01	Temperature setvalue changed from 20.0 °C to 25.0 °C.	
19/02/18	11:24:09	01	Digital channel: Dig. output 1 set to '1' by CID.	
19/02/18	11:24:34	01	Digital channel: Dig. output 2 set to '1' by CID.	
19/02/18	11:31:32	03	Test cabinet started in manual mode.	
19/02/18	11:31:35	03	Warning: Door open 01:FS:1	
19/02/18	11:31:37	01	Program: C:\CID-PRO5\ykkua\SchockPig.x00, number: 99 started.	
19/02/18	11:35:27	01	Measure file c:\CID-PRO5\messung\22222.m01 with 30 sec. interval activated manually.	
19/02/18	11:35:59	01	Digital channel: Dig. output 1 set to '0' by CID.	
19/02/18	11:40:01	01	Digital channel: Dig. output 2 set to '0' by CID.	
19/02/18	11:40:06	01	Temperature setvalue changed from 25.0 °C to 70.0 °C.	

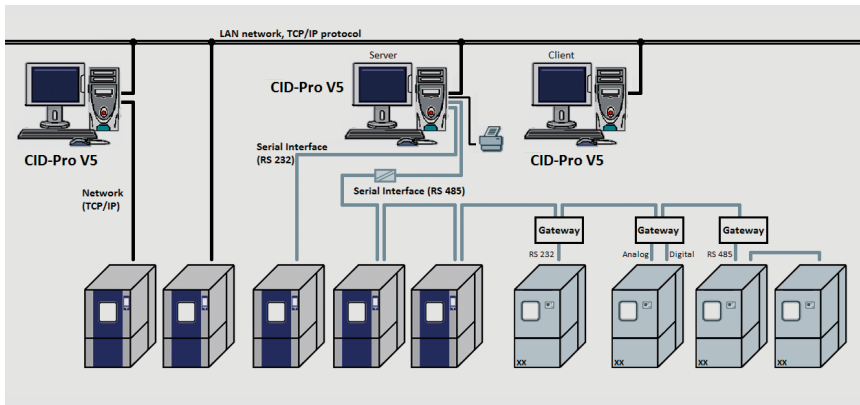
- ▶ Display all stored events, with adjustable options for selecting the information important for you.
- ▶ Insert general or device-related comments.
- ▶ External stand-alone module.
- ▶ Double-clicking on a report file immediately displays it in the report module
- ▶ Print or export all or the filtered entries.



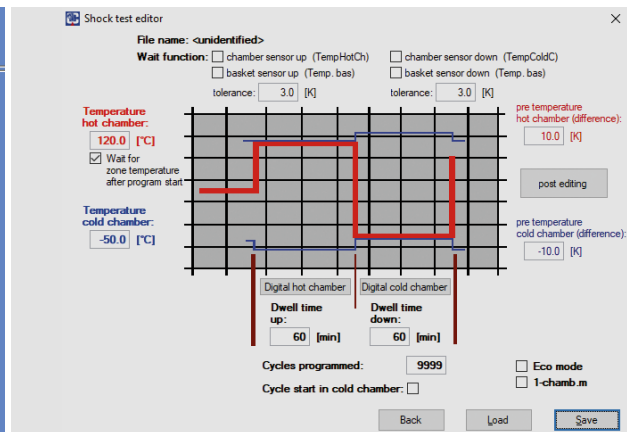
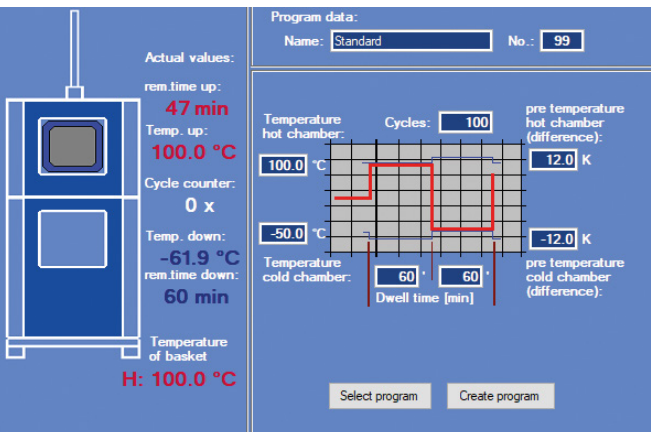
Visualizing

- ▶ This menu allows you to display the layout of your units visually, using site layout background images and pictures of the individual setups. Units can be configured with user-defined sizes, position and appearance.
- ▶ Key information is displayed when the cursor is moved over a chamber.

Networking



- ▶ No difference between the full version and the network version
 - now only CID-Pro V5 with full range of functions
 - A dongle (hardware key) is no longer necessary (licensing is per device: activate the „CID-Pro use for Ethernet“ via an activation code on the device).
- ▶ Communication to the setup is freely configurable through RS232, RS485 or a network.
- ▶ Additionally, an online monitoring function is provided for other computers on the network.



Temperature shock test chambers

- ▶ This special shock test menu provides a particularly clear display of the configuration, whether you examine the heating chamber, lower cold chamber or lift cage temperature
 - all information at a glance.
- ▶ With the shock test editor, standard shock test programs can easily be created.

Supported operating systems

- ▶ Microsoft Windows 10, 8, 7, Vista, XP (32 and 64 bit) and 2000+SP3

